

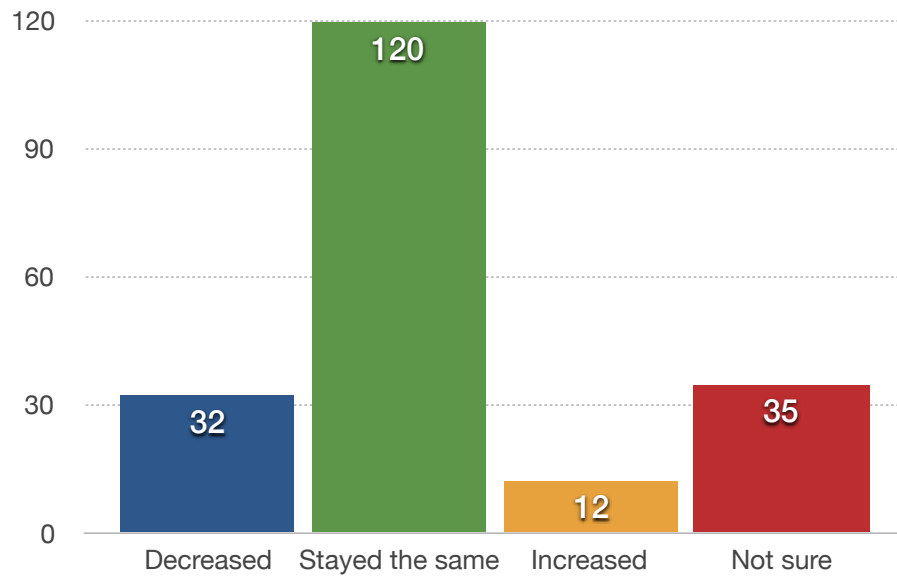
QUESTION 1

The New ordinance attempts to lower the amount of noise generated from sidewalk activity. From your experience, how have the general noise levels changed in the last two months?

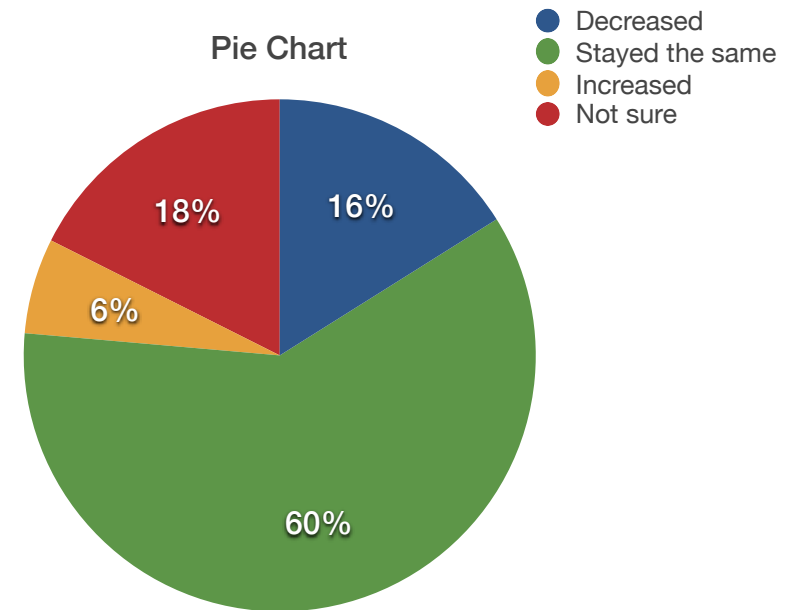
SURVEY RESULTS

ANSWERS	RESPONSES
Decreased	32
Stayed the same	120
Increased	12
Not sure	35
Total	199

Column Chart



Pie Chart



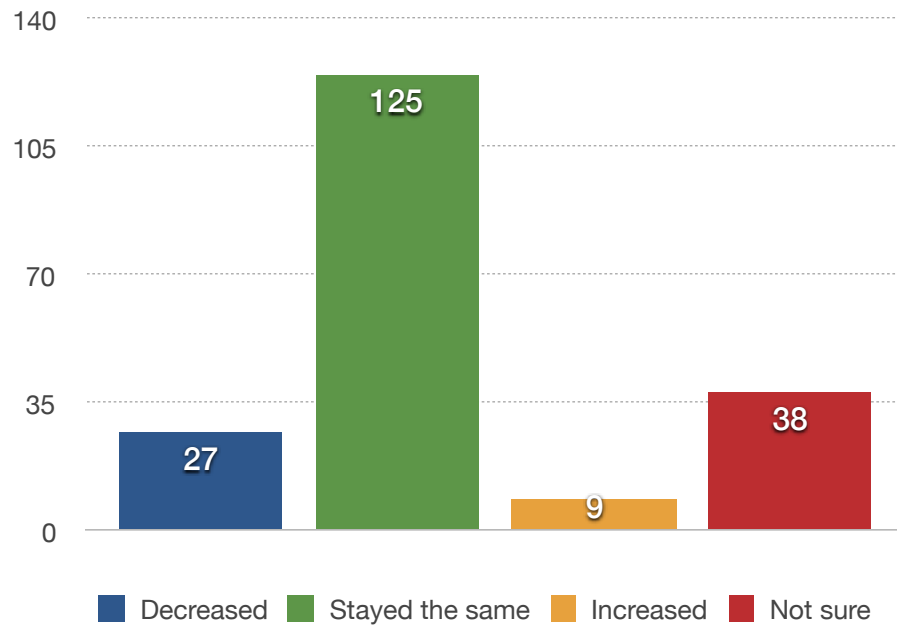
QUESTION 2

Now thinking specifically about businesses near your home with outdoor seating on the sidewalk, how has the amount of noise changed there in the last two months?

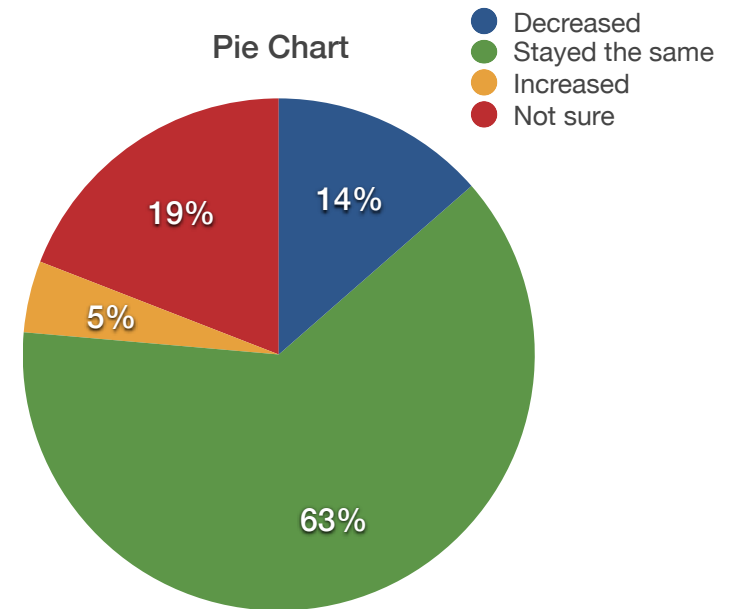
SURVEY RESULTS-2

ANSWERS	RESPONSES
Decreased	27
Stayed the same	125
Increased	9
Not sure	38
Total	199

Column Chart



Pie Chart

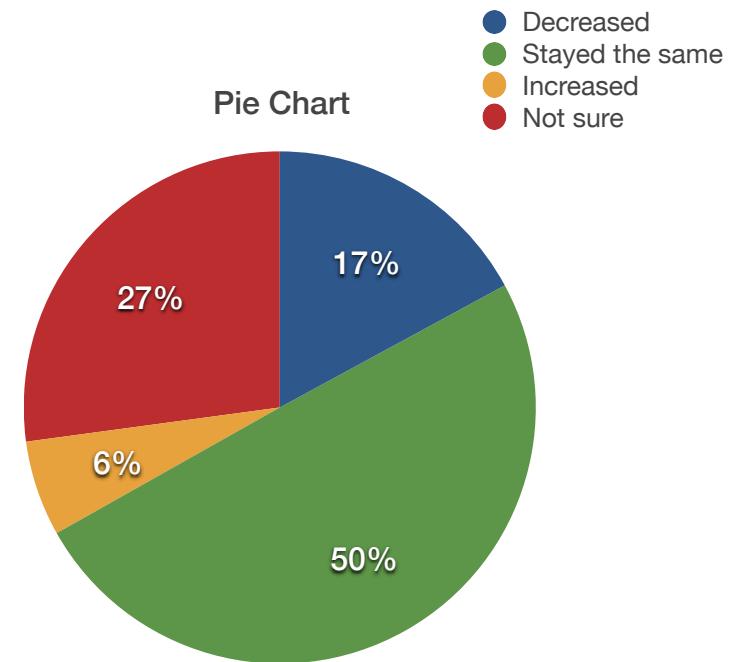
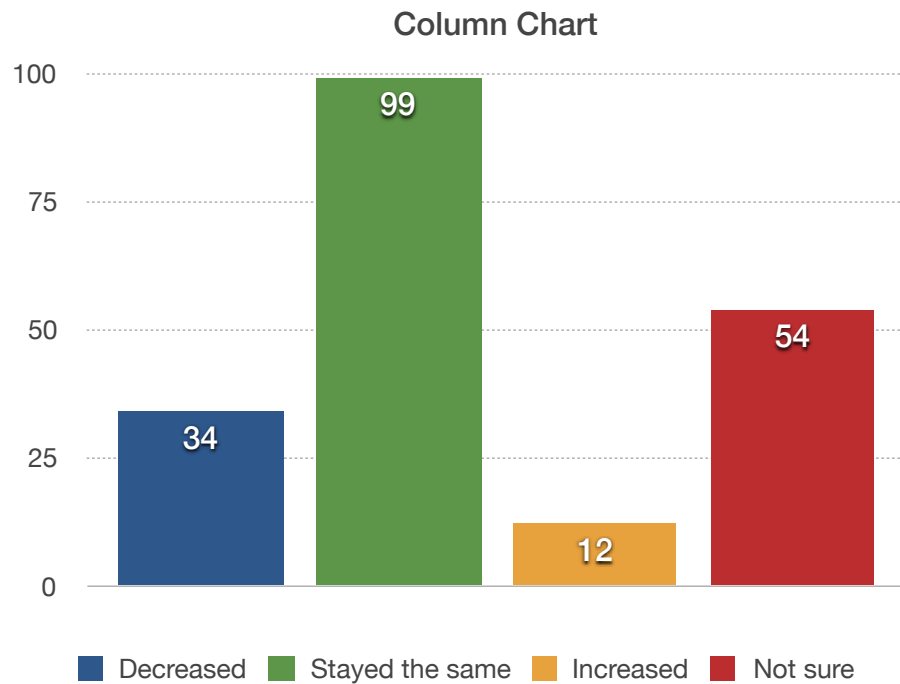


QUESTION 3

Under the new ordinance, outdoor seating on the sidewalk must close down at 12am Sun-Thurs, 1am Fri and Sat. From your experience, how have the levels of noise after businesses close down their outside seating changed?

SURVEY RESULTS-3

ANSWERS	RESPONSES
Decreased	34
Stayed the same	99
Increased	12
Not sure	54
Total	199



QUESTION 4

What is your general opinion of the new sidewalk ordinance?

OVERALL SURVEY RESULTS

ANSWERS	RESPONSES	%
Support in its current form	32	16%
Support with minor changes	39	20%
Do not support at all	128	64%
Total	199	100%

OVERALL RESPONSES

BY LOCATION	RESPONSES	%
Fayetteville Street	16	8%
Glenwood South	76	38%
Warehouse District	12	6%
Moore Square	10	5%
All other areas	85	43%
Total	199	100%

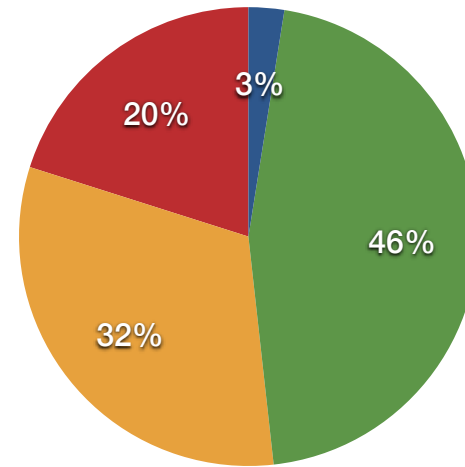
SURVEY RESULTS - BY LOCATION

BY LOCATION	DO NOT SUPPORT	SUPPORT	SUPPORT W/ CHANGES	TOTAL
Fayetteville Street	31%	38%	31%	100%
Glenwood South	80%	9%	11%	100%
Warehouse District	58%	25%	17%	100%
Moore Square	90%	10%	0%	100%
All other areas	54%	18%	28%	100%
Total	64%	16%	20%	100%

QUESTION 4

What is your general opinion of the new sidewalk ordinance?

Pie Chart - Age Group



● Under 25 ● 25 - 39 ● 40 - 55 ● Over 55

OVERALL RESPONSES - BY AGE GROUP

BY AGE GROUP	RESPONSES	%
Under 25	5	3%
25 - 39	91	46%
40 - 55	63	32%
Over 55	40	20%
Total	199	100%

SURVEY RESULTS - BY AGE GROUP

BY LOCATION	DO NOT SUPPORT	SUPPORT	SUPPORT W/ CHANGES	TOTAL
Under 25	80%	20%	0%	100%
25 - 39	75%	11%	14%	100%
40 - 55	59%	13%	29%	100%
Over 55	48%	33%	20%	100%
Total	64%	16%	20%	100%